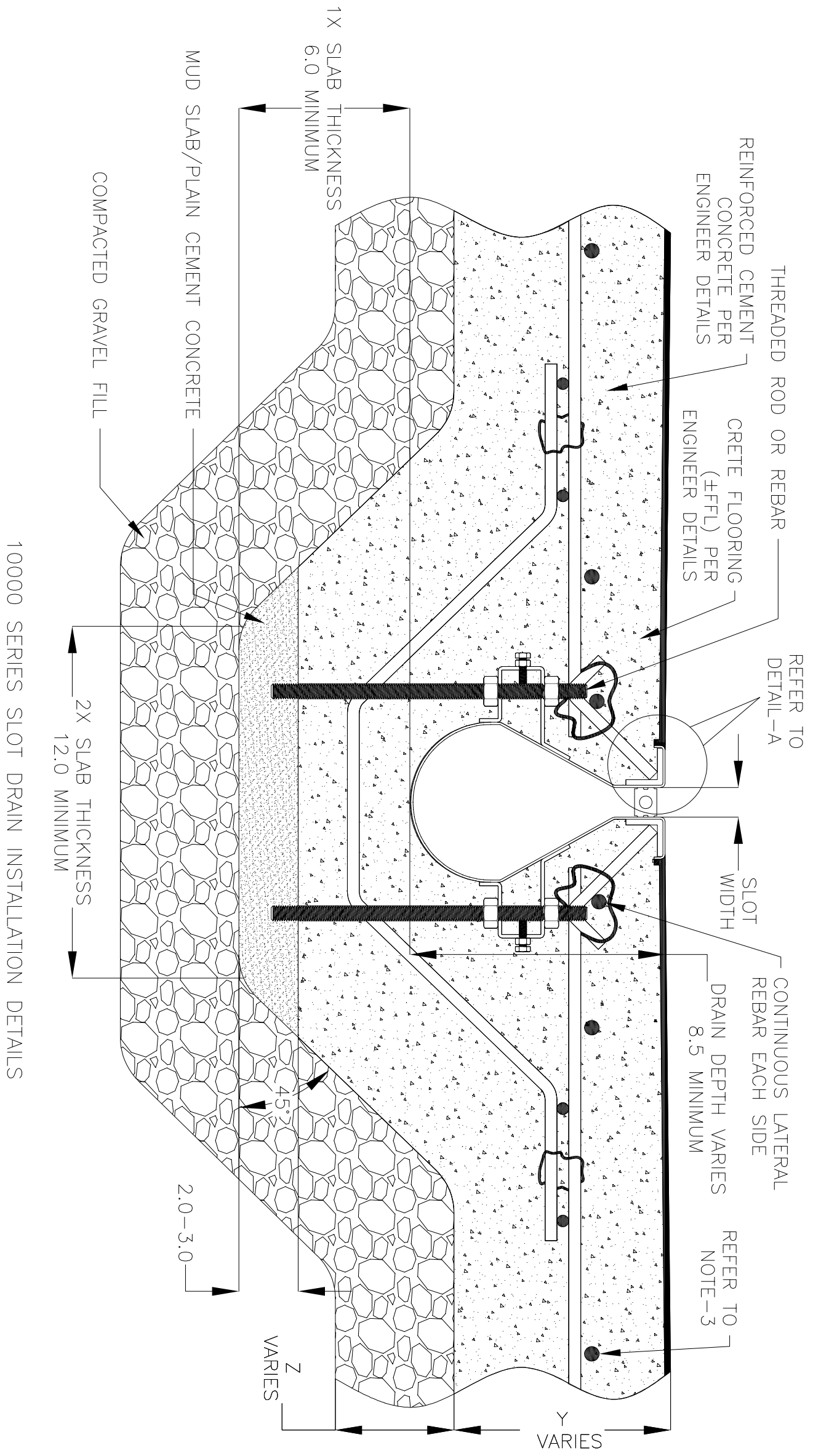


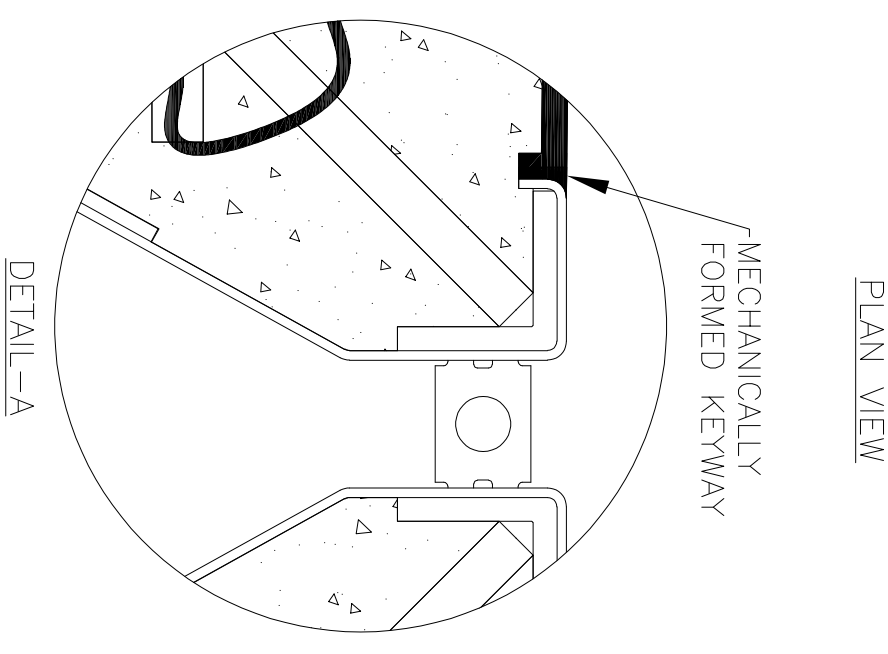
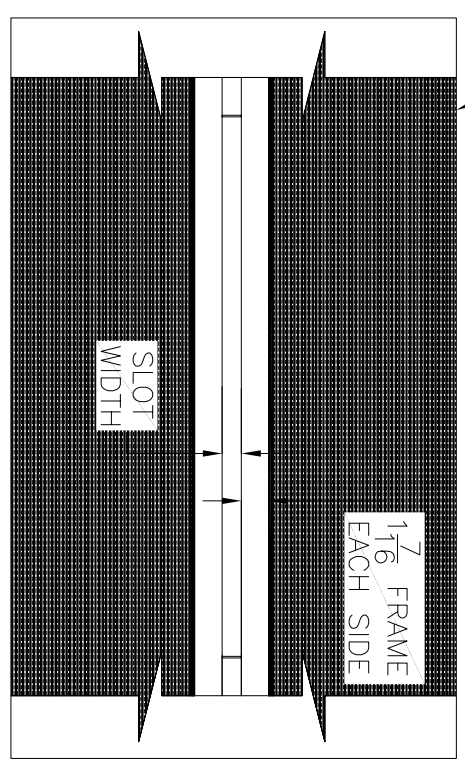
NOTES: UNLESS OTHERWISE SPECIFIED

1. ALL DIMENSIONS ARE IN INCHES.
2. DRAIN BODY MATERIAL: 14GA STAINLESS STEEL T304/T316
3. SPECIFYING ENGINEER IS RESPONSIBLE FOR CONCRETE ENGAGEMENT AND REINFORCING BASED UPON APPLICATION AND LOCAL CODES.
4. REFER TO <https://info.slotdrainsystems.com/installresources> FOR INSTALLATION INSTRUCTIONS.



CRETE FLOORING (±FFL) PER ENGINEER DETAILS

REVISIONS		DATE	BY
REV	DESCRIPTION	DATE	BY
0	INITIAL RELEASE - RO	6/8/2019	DK
1	UPDATED DRAIN SECTIONS.	12/2/2019	DK
2	UPDATED DRAIN LAYOUT WITH REBAR	12/2/2020	DK
3	UPDATED WITH 10KS DRAIN AND GLOBAL DRAIN TEMPLATE	3/19/2024	DK



ALL DRAWINGS ARE THE EXCLUSIVE PROPERTY OF SLOT DRAIN SYSTEMS. ANY REPRODUCTION IN PART OR IN WHOLE IS PROHIBITED WITHOUT PROPER CONSENT.

DRAWING TITLE		REV.	
CRETE FLOOR-NEW CONSTRUCTION INSTALLATION		3	
DRAIN SERIES		REV.	
10000 SERIES SLOT DRAIN		3	
DWG NO.	SIZE	SCALE	SHEET
IN-SD10000-001-R3	B	NTS	1 OF 1